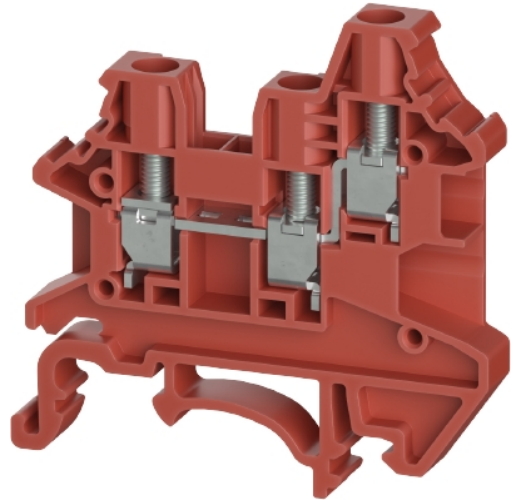


Data sheet

Commercial Art.No.: 5D.S04.5055.5

feed-through terminal WTN 4 D1/2 RT

feed-through terminal WTN 4 D1/2 RT rated voltage 800 V, rated current 32 A, screw connection, number of levels 1, number of clamp positions per level 3, nominal cross section 4 mm², connectable conductor cross section fine stranded without cable end sleeve 0,14mm² - 4mm², mounting method DIN rail (top hat rail), color red, width/grid dimension 6.1 mm, inflammability class of insulation material acc. with ul94 V0



Commercial Art.No.	5D.S04.5055.5
EAN	4049088725135
Order Unit	100

certificates / approvals



Technical data

general

nominal cross section	4 mm ²
color	red
number of levels	1
number of clamp positions per level	3
width/grid dimension	6.1 mm
insulating housing	PA
inflammability class of insulation material acc. with UL94	V0
mounting method	DIN rail (top hat rail)

technical data

rated current	32 A
rated voltage	800 V
rated impulse voltage	8 kV
pollution degree	3
closing plate required	yes
type of insulation material	thermoplastic
length	48.7 mm
width	6.1 mm

connection data

connection type	screw connection
connection type 1	screw connection

connection type 2	screw connection
minimum cross section solid	0.14 mm ²
maximum cross section solid	6 mm ²
minimum cross section fine stranded	0.14 mm ²
maximum cross section fine stranded	4 mm ²
minumum conductor cross section (flex., stranded) with cable end sleeve	0.34 mm ²
maximum conductor cross section (flex., stranded) with cable end sleeve	2.5 mm ²
wire strip length	10 mm
torque conductor mounting	0.5 Nm

technical data UL/CSA

cross section UL	22-10 AWG
voltage UL	600 V
current factory wiring	30 A
current field wiring	30 A
cross section CSA	22-10 AWG
voltage CSA	600 V
current CSA	30 A

classification

ETIM 9.0	EC000897
----------	----------

product compliance

REACH-SVHC conformity status	compliant
------------------------------	-----------

Accessories

Commercial Art.No.:	Article-type description:	Description:
0D.S04.3227.5	jumper bar IVB WTN 4-2	jumper bar IVB WTN 4-2 modular spacing 6.1 mm, insulated yes, number of poles 2, color red, mounting method pluggable, inflammability class of insulation material acc. with ul94 V0
0D.S04.3327.5	jumper bar IVB WTN 4-3	jumper bar IVB WTN 4-3 modular spacing 6.1 mm, insulated yes, number of poles 3, color red, mounting method pluggable, inflammability class of insulation material acc. with ul94 V0
0D.S04.3427.5	jumper bar IVB WTN 4-4	jumper bar IVB WTN 4-4 modular spacing 6.1 mm, insulated yes, number of poles 4, color red, mounting method pluggable, inflammability class of insulation material acc. with ul94 V0
0D.S04.3527.5	jumper bar IVB WTN 4-5	jumper bar IVB WTN 4-5 modular spacing 6.1 mm, insulated yes, number of poles 5, color red, mounting method pluggable, inflammability class of insulation material acc. with ul94 V0
0D.S04.4027.5	jumper bar IVB WTN 4-10	jumper bar IVB WTN 4-10 modular spacing 6.1 mm, insulated yes, number of poles 10, color red, mounting method pluggable, inflammability class of insulation material acc. with ul94 V0
0D.S04.5127.5	jumper bar IVB WTN 4R6	jumper bar IVB WTN 4R6 modular spacing 8.3 mm, insulated yes, number of poles 2, color red, mounting method pluggable, inflammability class of insulation material acc. with ul94 V0
0D.S04.5227.5	jumper bar IVB WTN 4R10	jumper bar IVB WTN 4R10 modular spacing 9.2 mm, insulated yes, number of poles 2, color red, mounting method pluggable, inflammability class of insulation material acc. with ul94 V0
0D.S03.2155.0	end plate APWTN 2,5/4 D1/2	

0D.S04.1055.9	partition TW 001 WTN	
0D.202.7281.0	marking strips WML 9.8/60	marking strips WML 9.8/60 color white
0D.204.7056.0	marking plate WMP 6.10-10	marking plate WMP 6.10-10 modular spacing 6.1 mm, color white

